

Please address all correspondence  
To Government Statistician  
In reply, please quote the file reference



File Ref: CPI 3/2019

GOVERNMENT OF SAMOA

## SAMOA BUREAU OF STATISTICS

# CONSUMER PRICE INDEX MARCH 2019

### Key findings:

The Consumer Price Index for March 2019 increased by 1.7 percent compared to the previous month.

- Housing, Water, Electricity, Gas and other Fuels index increased by 4.8 percent.
- The Food and Non Alcoholic Beverages index also increased by 2.7 percent.
- The Average Annual Inflation for the year ended March 2019 was 3.3 percent.

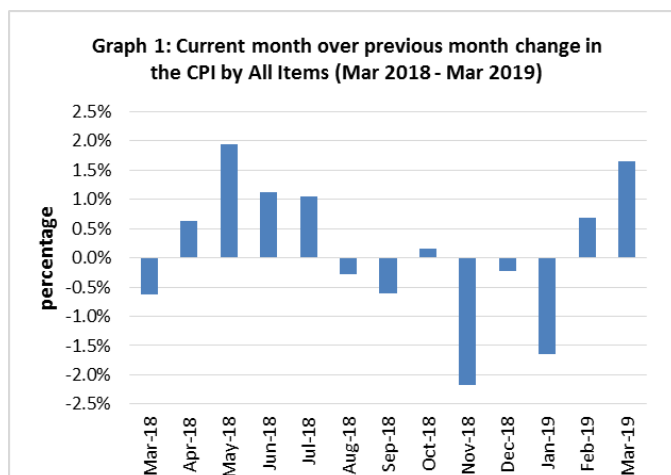
In the year to March 2019, the CPI rose 2.3 percent.

### SUMMARY

The Consumer Price Index for March 2019 was 1.7 percent higher than February 2019, and was 2.3 percent higher than March 2018.

The increase of the Local Goods component by 1.7 percent from the previous month was due to higher prices for electricity, local food and telephone calls, which were also the main contributors to the increase of 1.7 percent in the All Items Consumer Price Index.

The Imported Goods Component registered an increase of 1.6 percent from the previous month. Graph 1 shows the month to month percentage changes in the Consumer Price Index by all Divisions from March 2018 to March 2019.

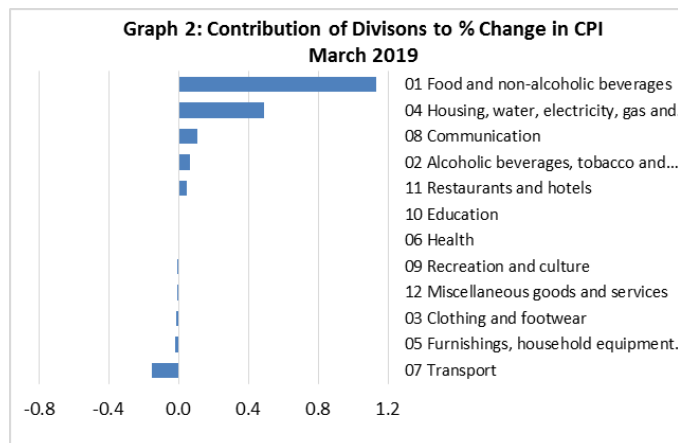


Source : Samoa Bureau of Statistics

## Total All Divisions Contribution

Food and Non Alcoholic Beverages, Housing, Water, Electricity, Gas and other Fuels and Communication divisions were the main contributors to the overall increase of 1.7 percent in the All Division Consumer Price Index.

On the other hand, there was offsetting negative contribution from the Transport division with 0.2 percent.

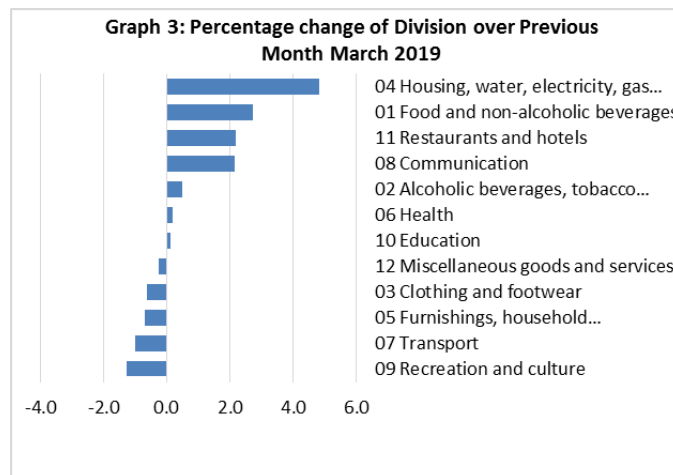


Source : Samoa Bureau of Statistics

## Consumer Price Index (% Change)

The 1.7 percent increase in the Overall Index was mainly due to an increase of 4.8 percent in the Housing, Water, Electricity, Gas and other Fuels index. The Food and Non Alcoholic Beverages index also recorded an increase of 2.7 percent, while Communication and Restaurants indices both registered increases of 2.2 percent. Alcoholic Beverages and Tobacco, Health and Education indices showed increases in the respective order of 0.5, 0.2 and 0.1 percent.

On the contrary, decreases were recorded for other divisions namely Recreation and culture with 1.3 percent, Transport with 1.0 percent, Furnishing, Household Equipment and Maintenance with 0.7 percent, Clothing and Footwear with 0.6 percent and Miscellaneous Goods and Services with 0.2 percent. Graphically presented in Graph 3 is the March 2019 percentage change for all divisions from February 2019.



Source : Samoa Bureau of Statistics

## Local Goods Component

The Local Goods Component of the Consumer Price Index registered an increase of 1.7 percent when compared to the previous month. This increase was mainly due to higher prices recorded for electricity (kwh), fresh fish (piece and large), koko samoa, banana, cucumber, tomato, head cabbage and telephone call.

## Imported Goods Component

Increased prices recorded for chicken leg quarter, butter, flour and spirit have resulted in the 1.6 percent increase in the Imported Goods Component.

## Housing, Water, Electricity, Gas and other Fuels Index

Higher prices recorded for electricity (kwh) and timber is reflected in the 4.8 percent increase in the Housing, Water, Electricity, Gas and other Fuels index.

## Food and Non Alcoholic Beverages Index

An increase of 2.7 percent in the Food and Non Alcoholic Beverages index was a reflection of the higher prices recorded for chicken leg quarter, butter, flour, fresh fish (piece and large), koko samoa, banana, cucumber, tomato and head cabbage.

## Communication Index

The 2.2 percent increase in the Communication index was result in the higher prices recorded for telephone call (international and local).

## Restaurants Index

Increased prices recorded for meal is reflected in the 2.2 percent increase in the Restaurants index.

## Alcoholic Beverages and Tobacco Index

The Alcoholic Beverages and Tobacco index recorded an increase of 0.5 percent higher due to the rise in prices recorded for spirits.

## Recreation and Culture Index

The 1.3 percent decrease in the Recreation and culture index was a result of the lower prices recorded for LCD television.

## Transport Index

A decrease of 1.0 percent in the Transport index was a reflection of the lower prices recorded for fuel (petrol) and airline fare (Apia-Auckland-Apia).

## Furnishings, Household Equipment, and Maintenance Index

Decreased prices recorded for washing soap, futon mattress and refrigerator is reflected in the 0.7 percent decrease in the Furnishing, Household, Equipment and Maintenance index.

## Clothing and Footwear Index

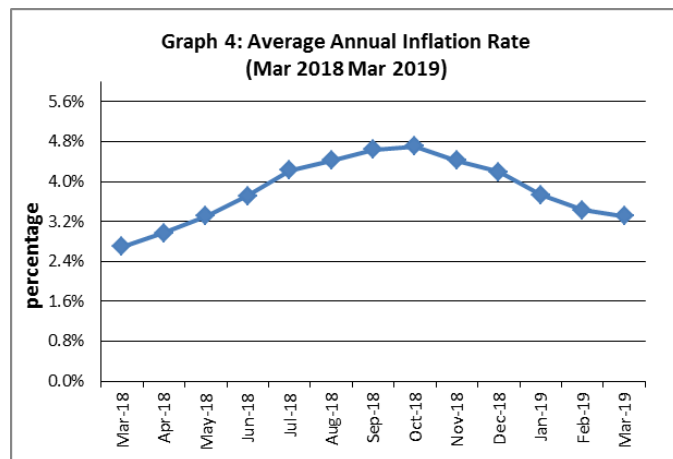
Lower prices recorded for aloha shirt and running shoe is reflected in the 0.6 percent decrease in the Clothing and Footwear index.

## Underlying Indices <sup>1/</sup>

The All Items Underlying Index for March 2019 registered an increase of 1.6 percent when compared to February 2019, and an increase of 1.8 percent when compared to March 2018. The Imported Items Underlying Index registered an increase of 1.9 percent, while Local Items Underlying Index also recorded an increase of 0.9 percent from the previous month.

## Inflation Rate

The average annual inflation rate for the year ended March 2019 was 3.3 percent. For the twelve months ending March 2018 the inflation rate was 2.7 percent. Presented in Graph 4 is the Average annual inflation rate (March 2018 - March 2019).



Source : Samoa Bureau of Statistics

The attached Tables and Graphs provide the user with more detailed analysis.

## Technical Notes:

*The Consumer Price (CPI) measures the rate of inflation for Samoa. It is designed to measure the change in prices for the goods purchased by households in Samoa. The CPI measures the change in prices by comparing the prices for a basket of goods and services at the collection period with the price for the same goods in a base period.*

*The basket of goods that is priced is based on the average expenditures of households as recorded in the Household Income and Expenditure Survey (HIES). The HIES survey identifies how much households spend on different items. The more households spend on an item on average, the more important it is to the price index, and the higher the weight in the index.*

*<sup>1/</sup> Monthly movements in the 'headline' CPI series can be volatile. This volatility reflects price changes in particular items that may be due, among other factors, to fluctuations in commodity markets and agricultural conditions, policy changes, or seasonal or infrequent price resetting.*

*Underlying inflation is a measure of inflation that excludes certain items that face volatile price movements. Underlying inflation eliminates products that can have temporary price shocks because these shocks can diverge from the overall trend of inflation and give a false measure of inflation.*

**SAMOA BUREAU OF STATISTICS**

*Economic Statistics Division  
FMFM II Building, Level 1  
P O Box 1151  
Apia, Samoa*

*Phone: (685) 62014/62015  
Fax: (685) 24675  
E-mail: [info.stats@sbs.gov.ws](mailto:info.stats@sbs.gov.ws)  
Website: [www.sbs.gov.ws](http://www.sbs.gov.ws)*

*Date of release: 9<sup>th</sup> April 2019*

*The next Consumer Price Index will be released on 9<sup>th</sup> May 2019.*



Aliimuamua Malaefono Tauā - T. Faasalaina  
**GOVERNMENT STATISTICIAN/(CEO)**

**Table 1. CONSUMER PRICE INDEX.**

**(Base Period : Average Prices February 2016 = 100)**

Group	All Items	Food and Non Alcoholic Beverages	Alcoholic Beverages, Tobacco and Narcotics	Clothing and Footwear	Housing, Water , Electricity, Gas and other Fuels	Furnishings, Household Equipment, and Maintenance	Health	Transport	Communication	Recreation and Culture	Education	Restaurants	Miscellaneous goods and services
<i>Weights</i>	<b>1000.0</b>	<b>403.7</b>	<b>128.4</b>	<b>21.2</b>	<b>119.6</b>	<b>30.8</b>	<b>4.6</b>	<b>148.5</b>	<b>51.5</b>	<b>6.1</b>	<b>19.7</b>	<b>22.4</b>	<b>43.5</b>
<i>Ave - 2016</i>	101.1	103.7	102.8	98.8	92.6	99.4	99.2	101.3	100.0	95.4	101.1	99.3	100.6
<i>Ave - 2017</i>	102.9	105.1	107.6	96.6	92.2	99.1	95.6	107.3	101.2	90.7	97.9	98.3	98.1
<i>Ave - 2018</i>	107.2	111.0	112.3	95.3	91.0	98.0	97.0	115.0	103.3	92.6	110.4	99.0	97.8
<i>2018</i>													
<i>March</i>	104.7	106.8	110.9	94.6	89.4	99.0	95.3	112.0	103.4	92.9	111.6	98.6	96.8
<i>April</i>	105.3	107.9	111.1	95.0	90.7	98.8	95.3	111.9	103.4	93.2	111.6	98.6	97.5
<i>May</i>	107.4	112.1	112.5	95.0	89.8	98.4	95.3	113.6	103.4	93.2	111.6	98.6	97.9
<i>June</i>	108.6	115.3	112.1	95.0	88.1	97.3	95.3	115.2	103.4	93.2	111.6	98.6	97.6
<i>July</i>	109.7	116.7	112.0	95.0	89.7	97.6	98.5	117.4	103.4	93.2	111.6	98.6	98.3
<i>August</i>	109.4	115.6	113.2	95.0	92.9	97.2	98.5	114.9	103.4	92.0	111.6	98.6	98.1
<i>September</i>	108.7	113.1	113.6	94.8	93.5	98.2	98.5	116.1	103.4	92.0	111.6	98.6	97.9
<i>October</i>	108.9	112.4	113.8	96.0	95.2	97.9	98.5	117.4	103.4	93.8	111.6	98.6	98.0
<i>November</i>	106.5	108.1	113.6	96.2	89.7	97.6	98.5	117.8	103.4	92.3	111.6	100.6	98.0
<i>December</i>	106.3	107.0	113.6	96.3	89.6	96.8	99.9	119.3	102.9	90.9	111.6	100.6	98.2
<i>2019</i>													
<i>January</i>	104.6	106.0	115.4	93.7	89.4	97.6	99.9	109.3	102.9	91.0	111.6	100.6	98.1
<i>February</i>	105.3	108.3	116.3	95.2	89.0	96.2	99.9	107.5	102.9	91.0	110.5	100.6	98.5
<i>March (P)</i>	107.0	111.3	116.8	94.7	93.3	95.5	100.1	106.4	105.2	89.8	110.6	102.8	98.3
<b><u>Percentage Change (P)</u></b>													
<i>Mar 2019 over Feb 2019</i>	1.7%	2.7%	0.5%	-0.6%	4.8%	-0.7%	0.2%	-1.0%	2.2%	-1.3%	0.1%	2.2%	-0.2%
<i>Mar 2019 over Mar 2018</i>	2.3%	4.2%	5.4%	0.0%	4.4%	-3.5%	5.0%	-5.0%	1.7%	-3.3%	-0.8%	4.2%	1.5%

Source : Samoa Bureau Statistics

(P) : Provisional figures

Note : n.a. Not applicable

**Table 2. ALL ITEMS UNDERLYING INDEX**

**(Base Period : Average Prices February 2016 = 100)**

Group	All Items	Food and Non Alcoholic Beverages	Alcoholic Beverages, Tobacco and Narcotics	Clothing and Footwear	Housing, Water , Electricity, Gas and other Fuels	Furnishings, Household Equipment, and Maintenance	Health	Transport	Communication	Recreation and Culture	Education	Restaurants	Miscellaneous goods and services
<i>Weights</i>	<b>586.7</b>	<b>345.3</b>	<i>n.a</i>	<b>21.2</b>	<b>24.2</b>	<b>30.8</b>	<b>3.5</b>	<b>26.4</b>	<b>51.5</b>	<b>5.6</b>	<b>12.3</b>	<b>22.4</b>	<b>43.5</b>
<i>Ave - 2016</i>	101.7	103.2		98.8	97.5	99.4	99.0	100.2		95.0		99.3	100.6
<i>Ave - 2017</i>	104.1	107.9		96.6	93.8	99.1	94.2	104.2	101.2	90.0	96.7	98.3	98.1
<i>Ave - 2018</i>	106.6	110.8		95.3	93.4	98.0	96.0	110.8	103.3	92.0	114.0	99.0	97.8
2018													
March	104.7	107.5		94.6	93.3	99.0	93.8	112.1	103.4	92.4	115.6	98.6	96.8
April	104.6	107.3		95.0	92.9	98.8	93.8	112.5	103.4	92.7	115.6	98.6	97.5
May	106.9	111.1		95.0	93.1	98.4	93.8	112.5	103.4	92.7	115.6	98.6	97.9
June	109.7	116.0		95.0	93.3	97.3	93.8	112.3	103.4	92.7	115.6	98.6	97.6
July	109.2	115.2		95.0	93.2	97.6	98.0	111.3	103.4	92.7	115.6	98.6	98.3
August	108.8	114.7		95.0	92.6	97.2	98.0	111.3	103.4	91.3	115.6	98.6	98.1
September	107.9	113.0		94.8	92.9	98.2	98.0	109.9	103.4	91.4	115.6	98.6	97.9
October	107.7	112.7		96.0	94.0	97.9	98.0	107.7	103.4	93.3	115.6	98.6	98.0
November	105.5	108.8		96.2	94.5	97.6	98.0	107.8	103.4	91.7	115.6	100.6	98.0
December	103.1	105.0		96.3	94.1	96.8	99.8	108.2	102.9	90.2	115.6	100.6	98.2
2019													
January	102.0	103.2		93.7	94.5	97.6	99.8	107.5	102.9	90.3	115.6	100.6	98.1
February	104.8	108.0		95.2	94.9	96.2	99.8	106.5	102.9	90.3	113.9	100.6	98.5
March (P)	106.5	110.5		94.7	94.7	95.5	100.1	107.4	105.2	89.0	113.9	102.8	98.3
<b><u>Percentage Change (P)</u></b>													
Mar 2019 over Feb 2019	1.6%	2.3%		-0.6%	-0.2%	-0.7%	0.3%	0.9%	2.2%	-1.4%	0.0%	2.2%	-0.2%
Mar 2019 over Mar 2018	1.8%	2.8%		0.0%	1.6%	-3.5%	6.8%	-4.2%	1.7%	-3.6%	-1.5%	4.2%	1.5%

Source : Samoa Bureau Statistics

(P) : Provisional figures

Note : n.a. Not applicable

**Table 3. AVERAGE RETAIL PRICES OF SELECTED COMMODITIES**

Commodities	Wt	Unit	2018			2019		
			Jan	Feb	Mar	Jan	Feb	Mar (P)
<b>01 Food and non-alcoholic beverages</b>								
Leg Quarters Chicken	62.2	kg	4.06	3.99	3.73	3.13	3.74	4.19
Raw Sugar	21.3	kg	2.95	2.99	3.00	2.69	2.76	2.65
Bread	17.2	loaf	1.68	1.72	1.70	1.68	1.70	1.70
Corned Beef (a)	15.9	12 oz	8.22	8.22	8.22	8.13	8.13	8.13
Taro	15.2	kg	2.08	1.98	1.91	2.99	2.44	2.07
Re-packed medium grain rice	13.4	kg	3.21	3.25	3.24	3.18	3.10	2.96
Prepacked medium grain rice (a)	13.4	907g	3.19	3.00	3.00	3.02	3.10	2.98
Canned fish between \$3.00 and \$3.99 Natural Oil	12.7	15 oz	3.51	3.48	3.49	3.47	3.42	3.45
Bongo	10.2	20grms	0.83	0.83	0.83	0.81	0.81	0.79
Keke Saina Biscuits (a)	9.2	pkt 10	6.40	6.40	6.50	6.29	6.39	6.39
Tip Top Ice Cream (a)	9.2	2 ltr	15.03	15.03	15.03	15.32	15.32	15.32
Ramen maggie	9.0	85grms	1.12	1.12	1.12	1.11	1.08	1.08
Fish (Piece)	7.9	kg	16.82	17.13	17.35	19.02	16.08	21.67
Butter Anchor	7.7	454g	13.46	13.46	13.46	13.61	13.96	14.46
Round Pancake (a)	7.5	sml	0.15	0.15	0.15	0.15	0.15	0.15
Mutton Flaps	6.6	kg	20.95	20.76	20.80	22.34	22.02	21.81
Canned fish \$4:00 or over N/Oil	6.4	15 oz	4.58	4.58	4.77	4.88	5.22	5.21
Canned fish under \$3.00 in N/Oil	6.4	15 oz	2.53	2.52	2.53	2.53	2.52	2.55
Wings Turkey	6.3	kg	6.70	6.06	6.61	6.08	6.25	6.27
Fish (string)	6.0	kg	11.06	9.76	9.97	11.68	11.15	10.84
Fish (large)	6.0	kg	18.58	16.47	15.90	21.00	16.58	17.51
<b>02 Alcoholic beverages, tobacco and narcotics</b>								
Lager Beer	37.9	355 mls	3.46	3.52	3.54	3.60	3.64	3.64
Pall Mall Filter Cigarettes (Red)	24.3	20 rolls	12.60	12.60	12.60	13.40	13.40	13.40
Pall Mall Menthol Cigarettes (Green)	24.3	20 rolls	12.60	12.60	12.60	13.40	13.40	13.40
Beer (a)	16.3	330 mls	3.34	3.34	3.34	3.36	3.36	3.36
Winfield Tobacco (a)	12.6	packet	15.00	15.00	15.00	15.00	15.00	15.00
<b>03 Clothing and footwear</b>								
Uniform le Faitaga College boys	4.3	size 8-10	32.33	31.33	31.33	29.33	29.67	29.67
Uniform Pa'ave (a)	3.7	size 7	32.67	32.67	32.67	34.67	35.33	35.33
<b>04 Housing, water, electricity, gas and other fuels</b>								
Electricity / Cashpower / kw h 1- 100 / total cost per t	50.6	kw h	0.67	0.62	0.59	0.58	0.58	0.67
Reservoir treated Water	28.5	15-40 m3	1.40	1.40	1.40	1.40	1.40	1.40
Liquid gas	15.8	9kg	59.50	61.00	61.00	62.00	62.00	62.00
Government house Rent	12.2	2 b/room	650.00	650.00	650.00	650.00	650.00	650.00

---

**05 Furnishings, household equipment and routine household maintenance**

Washing powder (a)	6.3	200g	1.84	1.81	1.81	1.73	1.73	1.73
Soap yellow Washing soap	5.9	bar	2.94	2.98	2.98	2.90	2.75	2.69
Mosquito coil	4.4	10 coil	1.18	1.18	1.18	1.30	1.20	1.20

**06 Health**

Amoxicillin mg Tablets (a)	2.5	500 mg	6.83	6.83	6.83	7.92	7.92	7.58
Hospital Charge	1.1	night	22.50	22.50	22.50	22.50	22.50	22.50

**07 Transport**

Petrol	60.8	1 ltr	2.70	2.67	2.69	2.57	2.41	2.40
Taxi Fare PO Motootua Hosp	8.2	per trip	4.80	4.80	4.80	4.80	4.80	4.80
Taxi Fares PO Malua	8.2	per trip	31.30	31.30	31.30	31.30	31.30	31.30
Taxi Fares PO Falefa	8.2	per trip	43.20	43.20	43.20	43.20	43.20	43.20
Air Fares Fagalii Pago Fagalii	6.8	return trip	380.00	380.00	380.00	395.00	395.00	395.00
Air Fares Apia Auckland Apia	6.8	1 month	1480.93	1005.50	1057.20	1066.87	1507.83	1259.11

**08 Communication**

Calling per minute Rate cell phone (a)	10.02	per minute	0.45	0.45	0.45	0.45	0.45	0.45
Internet data bundles per mb Rate (a)	10.02	per mb	0.25	0.25	0.25	0.25	0.25	0.25
Calling per minute Rate cell phone (a)	10.02	per minute	0.44	0.44	0.44	0.44	0.44	0.44
Internet data bundles per mb Rate (a)	10.02	per mb	0.20	0.20	0.20	0.20	0.20	0.20

**09 Recreation and culture**

Television (a)	2.30	LCD	966.00	966.00	966.00	968.83	968.83	918.83
Exercise Book w arwick	1.44	1B4 64 pa	1.37	1.45	1.45	1.35	1.35	1.35
Laptop (a)	1.33	each	2952.60	2952.60	2952.60	2878.60	2878.60	2938.60

**10 Education**

Fees PTA Primary Y Urban Registration fees (a)	7.23	Year 6	62.50	82.50	82.50	82.50	82.50	82.50
Fees PTA Secondary Y Urban Registration fees (a)	5.11	Year 10	50.00	52.00	52.00	52.00	50.00	50.00
Fees Tertiary NUS registration School Fees	3.79	registratio	292.00	320.00	320.00	320.00	320.00	322.00
Fees Secondary Y Examination Fees (a)	3.61	Y12-13	25.50	25.50	25.50	25.50	25.50	25.50

**11 Restaurants and hotels**

Fish & Chip Meal	7.79	1 serve	9.17	9.17	9.17	9.17	9.17	9.17
Curry & Chopsuey Meal	4.87	1 serve	3.00	3.00	3.00	3.33	3.33	3.67
Chicken & Chips Meal (a)	4.87	1 serve	9.36	9.36	9.36	9.36	9.36	9.36
Steam rice & chicken Meal (a)	4.87	1 serve	4.83	4.83	4.83	4.83	4.83	4.83

**12 Miscellaneous goods and services**

Paper Sofan deluxe ply Toilet Paper	8.52	250 sheet	0.98	0.98	0.98	1.01	1.04	1.03
Hair Gel	4.59	1124ml	4.77	4.81	4.31	4.36	4.36	4.40
Remains price for Storage of remains (a)	4.41	per day	60.00	60.00	60.00	60.00	60.00	60.00
Basic Casket (a)	4.41	each	1966.67	1966.67	1966.67	1966.67	1966.67	1966.67
Standard Embalming (a)	4.41	1 person	1500.00	1500.00	1500.00	1500.00	1500.00	1500.00
Toilet soap (a)	4.38	90g	1.83	1.83	1.83	1.85	1.88	1.89
Diapers (a)	4.19	5kg-10kg	9.94	9.97	9.97	9.21	9.21	9.14

Source : Samoa Bureau Statistics

(a) : New commodity from February 2016

(P) : Provisional figures

Note : Please note unit of conversion was in pound's (lb's) but been converted into kilograms (kg)



**Table 4. IMPORTED GOODS COMPONENT OF THE CONSUMER PRICE INDEX**  
(Base Period : Average Prices February 2016 = 100)

Group	All Items	Food and Non Alcoholic Beverages	Alcoholic Beverages, Tobacco and Narcotics	Clothing and Footwear	Housing, Water , Electricity, Gas and other Fuels	Furnishings, Household Equipment and Maintenance	Health	Transport	Communication	Recreation and Culture	Education	Restaurants	Miscellaneous goods and services
<i>Weights</i>	<b>494.7</b>	<b>269.1</b>	<b>23.8</b>	<b>15.2</b>	<b>28.3</b>	<b>26.9</b>	<b>2.5</b>	<b>88.6</b>	<i>n.a</i>	<b>5.6</b>	<i>n.a</i>	<i>n.a</i>	<b>34.7</b>
<i>Ave - 2016</i>	102.5	103.9	105.1	98.8	98.7	99.3	98.5	101.8		95.0			100.7
<i>Ave - 2017</i>	107.3	110.1	110.0	97.0	97.6	98.9	91.7	111.2		90.0			97.1
<i>Ave - 2018</i>	111.9	113.8	113.5	96.1	100.6	97.6	94.3	124.0		92.0			96.6
2018													
March	108.8	109.5	110.7	95.4	99.8	98.8	91.1	121.2		92.4			95.4
April	108.4	109.4	110.7	95.5	99.2	98.5	91.1	119.3		92.7			96.3
May	111.6	114.3	114.9	95.6	99.3	98.1	91.1	120.7		92.7			96.8
June	115.5	120.5	115.0	95.6	100.6	96.9	91.1	123.8		92.7			96.5
July	115.6	119.4	115.0	95.5	101.0	97.2	97.1	127.2		92.7			97.2
August	114.7	118.8	115.0	95.5	100.1	96.7	97.1	124.5		91.3			97.1
September	113.9	116.6	115.0	95.5	100.9	97.9	97.1	126.2		91.4			96.8
October	113.8	116.2	115.0	97.0	101.9	97.5	97.1	126.5		93.3			96.9
November	111.7	111.1	115.0	97.2	103.0	97.2	97.1	129.6		91.7			96.9
December	108.6	106.2	115.0	97.6	102.9	96.3	99.8	127.3		90.2			97.2
2019													
January	105.2	103.9	115.0	94.5	101.8	97.2	99.8	116.3		90.3			97.0
February	107.4	110.0	116.6	95.4	100.0	95.6	99.8	110.4		90.3			97.5
March (P)	109.2	113.2	119.5	94.8	99.8	94.8	97.5	110.3		89.0			97.2
<b><u>Percentage Change (P)</u></b>													
Mar 2019 over Feb 2019	1.6%	2.9%	2.5%	-0.6%	-0.3%	-0.8%	-2.3%	-0.1%		-1.4%			-0.3%
Mar 2019 over Mar 2018	0.3%	3.3%	7.9%	-0.6%	0.0%	-4.0%	7.0%	-9.0%		-3.6%			2.0%

Source : Samoa Bureau Statistics

(P) : Provisional figures

Note : n.a. Not applicable

**Table 5. IMPORTED ITEMS UNDERLYING INDEX**

**(Base Period : Average Prices February 2016 = 100)**

Group	All Items	Food and Non Alcoholic Beverages	Alcoholic Beverages, Tobacco and Narcotics	Clothing and Footwear	Housing, Water , Electricity, Gas and other Fuels	Furnishings, Household Equipment and Maintenance	Health	Transport	Communication	Recreation and Culture	Education	Restaurants	Miscellaneous goods and services
<b>Weights</b>	<b>401.2</b>	<b>269.1</b>	<b>n.a</b>	<b>15.2</b>	<b>24.2</b>	<b>26.9</b>	<b>2.5</b>	<b>23.0</b>	<b>n.a</b>	<b>5.6</b>	<b>n.a</b>	<b>n.a</b>	<b>34.7</b>
Ave - 2016	102.4	103.9		98.8	97.5	99.3	98.5	100.1		95.0			100.7
Ave - 2017	106.0	110.1		97.0	93.8	98.9	91.7	104.5		90.0			97.1
Ave - 2018	108.8	113.8		96.1	93.4	97.6	94.3	111.2		92.0			96.6
2018													
March	105.9	109.5		95.4	93.3	98.8	91.1	112.6		92.4			95.4
April	105.9	109.4		95.5	92.9	98.5	91.1	113.1		92.7			96.3
May	109.2	114.3		95.6	93.1	98.1	91.1	113.1		92.7			96.8
June	113.2	120.5		95.6	93.3	96.9	91.1	112.9		92.7			96.5
July	112.6	119.4		95.5	93.2	97.2	97.1	111.7		92.7			97.2
August	112.0	118.8		95.5	92.6	96.7	97.1	111.7		91.3			97.1
September	110.6	116.6		95.5	92.9	97.9	97.1	110.1		91.4			96.8
October	110.3	116.2		97.0	94.0	97.5	97.1	107.5		93.3			96.9
November	106.9	111.1		97.2	94.5	97.2	97.1	107.7		91.7			96.9
December	103.6	106.2		97.6	94.1	96.3	99.8	108.1		90.2			97.2
2019													
January	101.9	103.9		94.5	94.5	97.2	99.8	107.3		90.3			97.0
February	105.9	110.0		95.4	94.9	95.6	99.8	106.2		90.3			97.5
March (P)	108.0	113.2		94.8	94.7	94.8	97.5	107.3		89.0			97.2
<b><u>Percentage Change (P)</u></b>													
Mar 2019 over Feb 2019	1.9%	2.9%		-0.6%	-0.2%	-0.8%	-2.3%	1.0%		-1.4%			-0.3%
Mar 2019 over Mar 2018	2.0%	3.3%		-0.6%	1.6%	-4.0%	7.0%	-4.8%		-3.6%			2.0%

Source : Samoa Bureau Statistics

(P) : Provisional figures

Note : n.a. Not applicable

**Table 6. LOCAL GOODS COMPONENT OF THE CONSUMER PRICE INDEX**  
(Base Period : Average Prices February 2016 = 100)

Group	All Items	Food and Non Alcoholic Beverages	Alcoholic Beverages, Tobacco and Narcotics	Clothing and Footwear	Housing, Water , Electricity, Gas and other Fuels	Furnishings, Household Equipment and Maintenance	Health	Transport	Communication	Recreation and Culture	Education	Restaurants	Miscellaneous goods and services
<b>Weights</b>	<b>505.3</b>	<b>134.6</b>	<b>104.6</b>	<b>6.0</b>	<b>91.3</b>	<b>3.9</b>	<b>2.2</b>	<b>59.9</b>	<b>51.5</b>	<b>0.4</b>	<b>19.7</b>	<b>22.4</b>	<b>8.8</b>
Ave - 2016	99.7	102.5	102.3	98.6	90.7	100.0	100.0	100.5	100.0	100.0	101.1	99.3	
Ave - 2017	98.6	95.0	107.1	95.7	90.6	100.1	100.0	101.6	101.2	100.0	97.9	98.3	102.3
Ave - 2018	102.6	105.3	112.0	93.3	88.1	100.3	100.0	101.7	103.3	100.0	110.4	99.0	102.3
2018													
March	100.6	101.2	110.9	92.8	86.2	100.3	100.0	98.3	103.4	100.0	111.6	98.6	102.3
April	102.3	104.9	111.1	93.7	88.1	100.3	100.0	100.8	103.4	100.0	111.6	98.6	102.3
May	103.2	107.8	112.0	93.7	86.8	100.3	100.0	103.1	103.4	100.0	111.6	98.6	102.3
June	101.8	104.9	111.4	93.7	84.3	100.3	100.0	102.4	103.4	100.0	111.6	98.6	102.3
July	103.9	111.3	111.3	93.7	86.2	100.3	100.0	102.8	103.4	100.0	111.6	98.6	102.3
August	104.2	109.2	112.8	93.6	90.6	100.3	100.0	100.8	103.4	100.0	111.6	98.6	102.3
September	103.6	106.1	113.3	93.0	91.3	100.3	100.0	101.1	103.4	100.0	111.6	98.6	102.3
October	104.1	104.9	113.5	93.6	93.2	100.3	100.0	104.1	103.4	100.0	111.6	98.6	102.3
November	101.5	101.9	113.3	93.5	85.5	100.3	100.0	100.2	103.4	100.0	111.6	100.6	102.3
December	104.0	108.7	113.2	93.0	85.5	100.3	100.0	107.5	102.9	100.0	111.6	100.6	102.3
2019													
January	103.9	110.1	115.5	91.8	85.5	100.3	100.0	98.8	102.9	100.0	111.6	100.6	102.3
February	103.2	105.1	116.2	94.8	85.5	100.3	100.0	103.2	102.9	100.0	110.5	100.6	102.3
March (P)	104.9	107.5	116.2	94.2	91.3	100.3	103.0	100.7	105.2	100.0	110.6	102.8	102.3
<b><u>Percentage Change (P)</u></b>													
Mar 2019 over Feb 2019	1.7%	2.3%	0.0%	-0.6%	6.7%	0.0%	3.0%	-2.4%	2.2%	0.0%	0.1%	2.2%	0.0%
Mar 2019 over Mar 2018	4.3%	6.2%	4.8%	1.5%	5.9%	0.0%	3.0%	2.5%	1.7%	0.0%	-0.8%	4.2%	0.0%

Source : Samoa Bureau Statistics

(P) : Provisional figures

Note : n.a. Not applicable

**Table 7. LOCAL ITEMS UNDERLYING INDEX**

(Base Period : Average Prices February 2016 = 100)

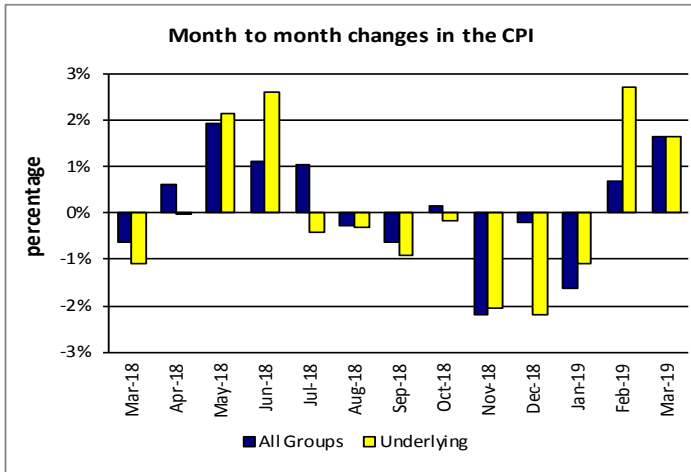
Group	All Items	Food and Non Alcoholic Beverages	Alcoholic Beverages, Tobacco and Narcotics	Clothing and Footwear	Housing, Water , Electricity, Gas and other Fuels	Furnishings, Household Equipment and Maintenance	Health	Transport	Communication	Recreation and Culture	Education	Restaurants	Miscellaneous goods and services
<b>Weights</b>	<b>185.5</b>	<b>76.1</b>	<b>n.a</b>	<b>6.0</b>	<b>n.a</b>	<b>3.9</b>	<b>1.0</b>	<b>3.4</b>	<b>51.5</b>	<b>n.a</b>	<b>12.3</b>	<b>22.4</b>	<b>8.8</b>
Ave - 2016	100.3	100.6		98.6		100.0	100.0	101.0				99.3	
Ave - 2017	99.9	100.1		95.7		100.1	100.0	101.8	101.2		96.7	98.3	102.3
Ave - 2018	101.9	100.3		93.3		100.3	100.0	108.3	103.3		114.0	99.0	102.3
2018													
March	102.0	100.3		92.8		100.3	100.0	108.6	103.4		115.6	98.6	102.3
April	101.9	100.0		93.7		100.3	100.0	108.6	103.4		115.6	98.6	102.3
May	101.8	99.8		93.7		100.3	100.0	108.6	103.4		115.6	98.6	102.3
June	102.0	100.2		93.7		100.3	100.0	108.6	103.4		115.6	98.6	102.3
July	101.9	100.0		93.7		100.3	100.0	108.6	103.4		115.6	98.6	102.3
August	101.9	100.2		93.6		100.3	100.0	108.6	103.4		115.6	98.6	102.3
September	102.0	100.3		93.0		100.3	100.0	108.6	103.4		115.6	98.6	102.3
October	102.0	100.4		93.6		100.3	100.0	108.6	103.4		115.6	98.6	102.3
November	102.4	100.7		93.5		100.3	100.0	108.6	103.4		115.6	100.6	102.3
December	102.2	100.7		93.0		100.3	100.0	108.6	102.9		115.6	100.6	102.3
2019													
January	102.2	100.7		91.8		100.3	100.0	108.6	102.9		115.6	100.6	102.3
February	102.4	101.1		94.8		100.3	100.0	108.6	102.9		113.9	100.6	102.3
March (P)	103.3	101.3		94.2		100.3	106.3	108.6	105.2		113.9	102.8	102.3
<b><u>Percentage Change (P)</u></b>													
Mar 2019 over Feb 2019	0.9%	0.1%		-0.6%		0.0%	6.3%	0.0%	2.2%		0.0%	2.2%	0.0%
Mar 2019 over Mar 2018	1.3%	1.0%		1.5%		0.0%	6.3%	0.0%	1.7%		-1.5%	4.2%	0.0%

Source : Samoa Bureau Statistics

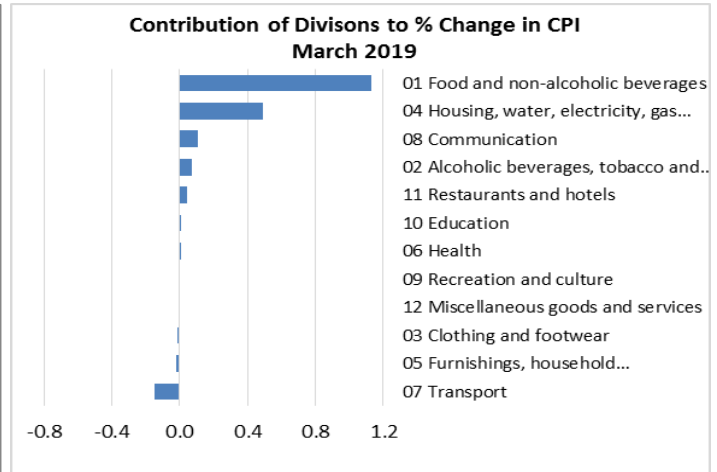
(P) : Provisional figures

Note : n.a. Not applicable

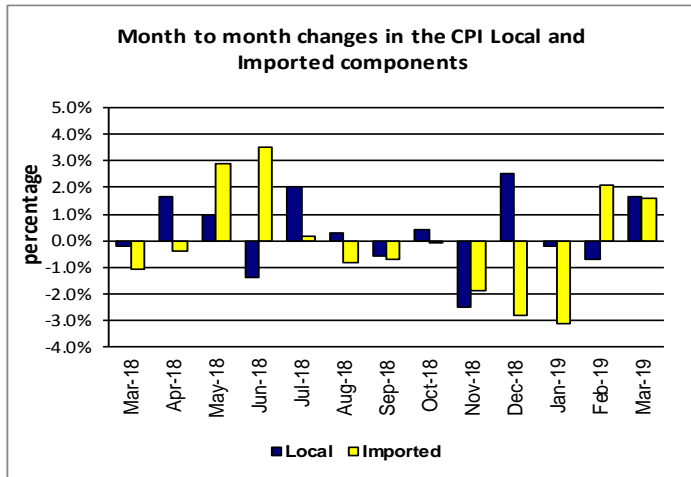
**Graph.5**



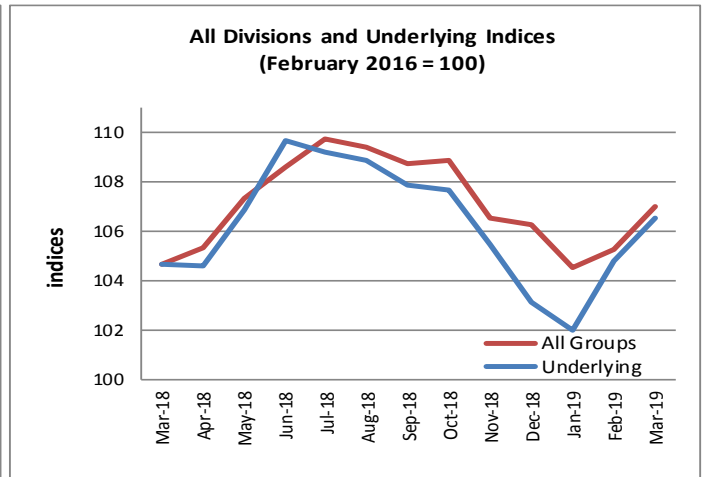
**Graph.6**



**Graph.7**



**Graph.8**



**Graph.9**

